

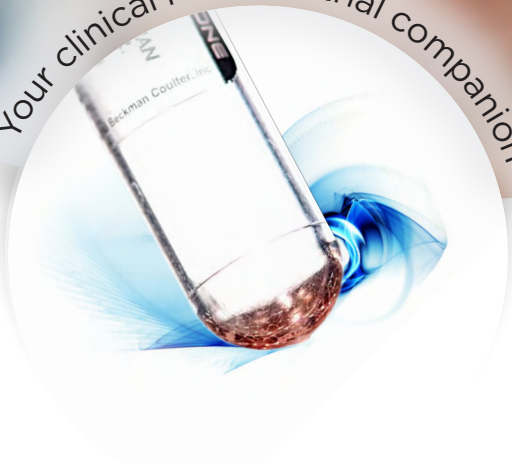


# DURACLONE IF

BE CERTAIN ABOUT THE RESPONSE



Your clinical research trial companion



**VISUALIZE**  
*the possibilities.*

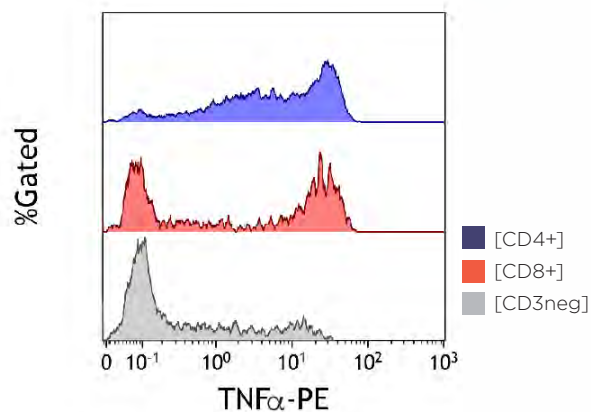
For Research Use Only - Not for use in Diagnostic procedures

 **BECKMAN  
COULTER**  
*Life Sciences*

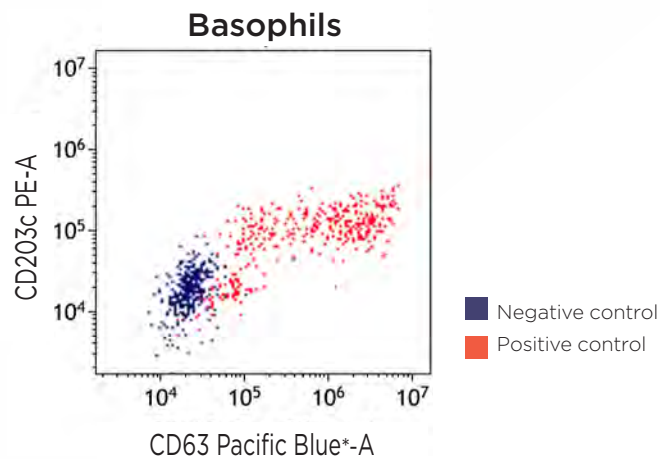
# BE CERTAIN ABOUT THE RESPONSE

The sensitive and specific characterization of an immune response at the single cell level demonstrates the unique strength of cytometry. When using dry pre-formulated DURAClone IF antibody panels you can be certain that functional cellular assays are not biased by antibody pipetting variability or suboptimal panel design.

Heterogeneity of  $TNF\alpha$  production in T cell subpopulations (data obtained from normal whole blood upon stimulation, acquired on Navios cytometer).



Surface exposure pattern of CD63 and CD203c, representing differential pathways and kinetics of basophil activation (data obtained from whole blood upon stimulation, acquired on CytoFLEX cytometer).



# DURAClone IF PANELS

## Antibody Combinations for Immune Functional Cytometry

The DURAClone IF panels reveal immune function at the single cell level enabling a streamlined workflow.

- Pre-formulated 4-6 color antibody panels
- Unitized dry Beckman Coulter proprietary format
- Expert-proven marker combinations
- 25 tests/package

Product	405 nm		488 nm					633 nm				Quality Standard
	PB	KrO	FITC	PE	ECD	PC5.5	PC7	APC	AF647	AF700	AF750	
IF T Activation B88649 (25 tests RUO)	CD4	-	IFN $\gamma$	TNF $\alpha$	-	-	IL-2	-		CD8	CD3	GMP
IF T Helper Cell C04666 (25 tests RUO)	IL-17A	-	IFN $\gamma$	-	-	-	IL-4	CD4		-	CD3	
<i>New!</i> IF Monocytes Activation C21858 (25 tests RUO)	CD14	CD45	-	HLA-DR	-	-	-	-		TNF $\alpha$	-	
<i>New!</i> IF Basophil Activation C23406 (25 tests RUO)	CD63	CD45	-	CD203c	-	-	CD3	-	CD294 (CRTH2)	-	-	

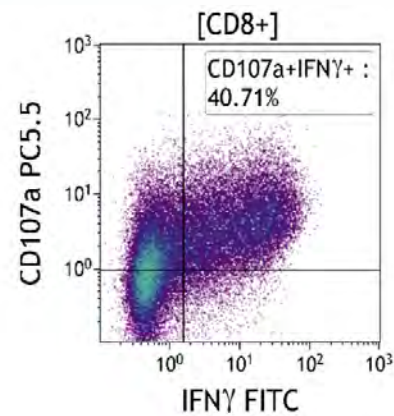
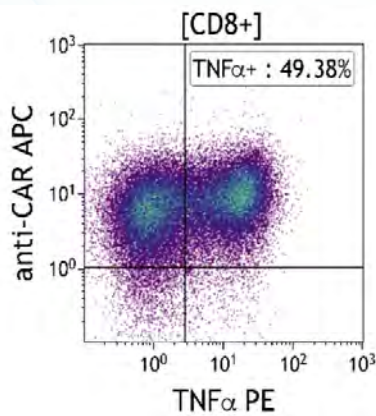
Ca<sup>2+</sup>-depleting anticoagulants may interfere with functional testing. Depending on the assay and the specific conditions under which the assay is conducted the addition of Ca<sup>2+</sup> activation buffer (C23407) could reverse this effect.



# FLEXIBILITY TO ADAPT TO YOUR RESEARCH

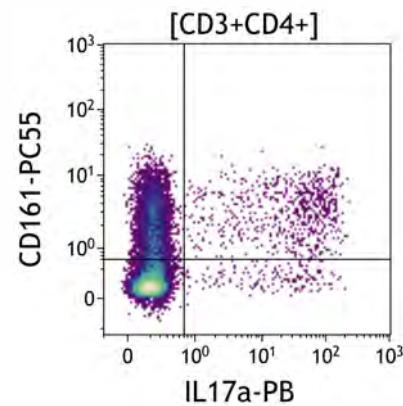
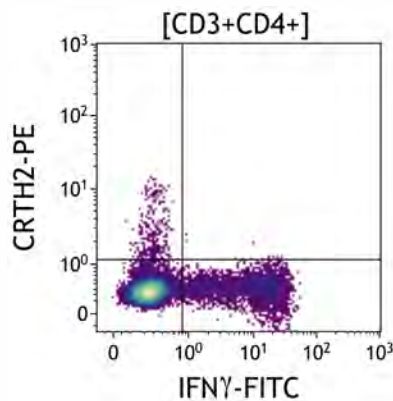
The DURAClone IF panels accommodate drop-in markers with bright and broadly available labels such as PE or APC so you can adapt the panels to your specific research needs.

Example for adaption of the IF T Activation tube with anti-CAR\*-APC and CD107a-PC5.5 drop-in markers. Data was acquired on a Navios cytometer, kindly provided by Dr. Agnieszka Blum/Charite Berlin.



\* Chimeric Antigen Receptor

Example for adaption of the IF T Helper Cell tube with CRTH2-PE and CD161-PC5.5 drop-in markers (data was acquired on a Navios cytometer).



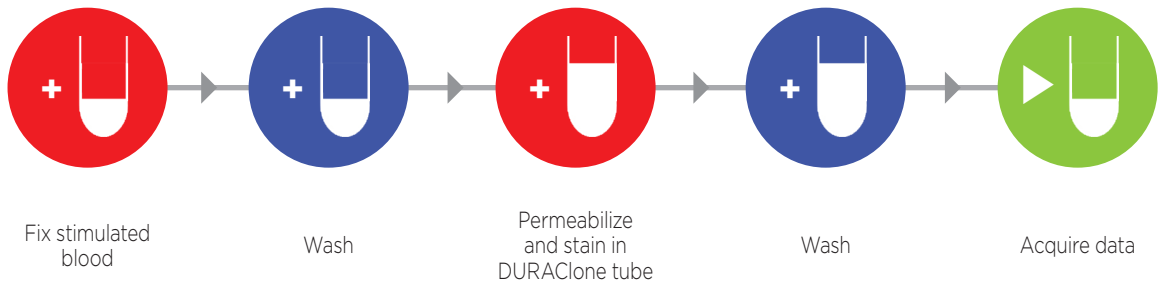
# STREAMLINE YOUR WORKFLOW WITH DURAClone IF

In the DURAClone IF kits every assay tube contains a layer with the dried-down antibody panel. The elimination of antibody pipetting shortens the turn-around-time, minimizes human error sources and purges the workflow from repetitive actions that are expensive to automate.

## Workflow for DURAClone IF Panels

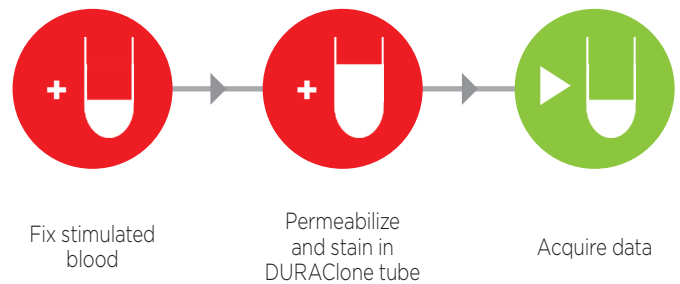
### DURAClone IF T Activation T Helper Cell

Stimulate blood  
with e.g. PMA/  
Ionomycin/BrefA  
(C11101 DURActive 1)

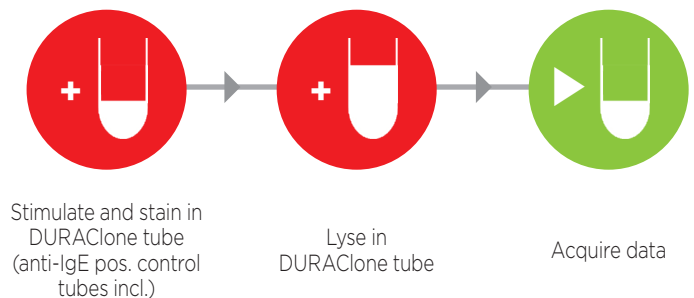


### DURAClone IF Monocyte Activation

Stimulate blood  
with e.g. LPS  
(C21857 DURActive 3)



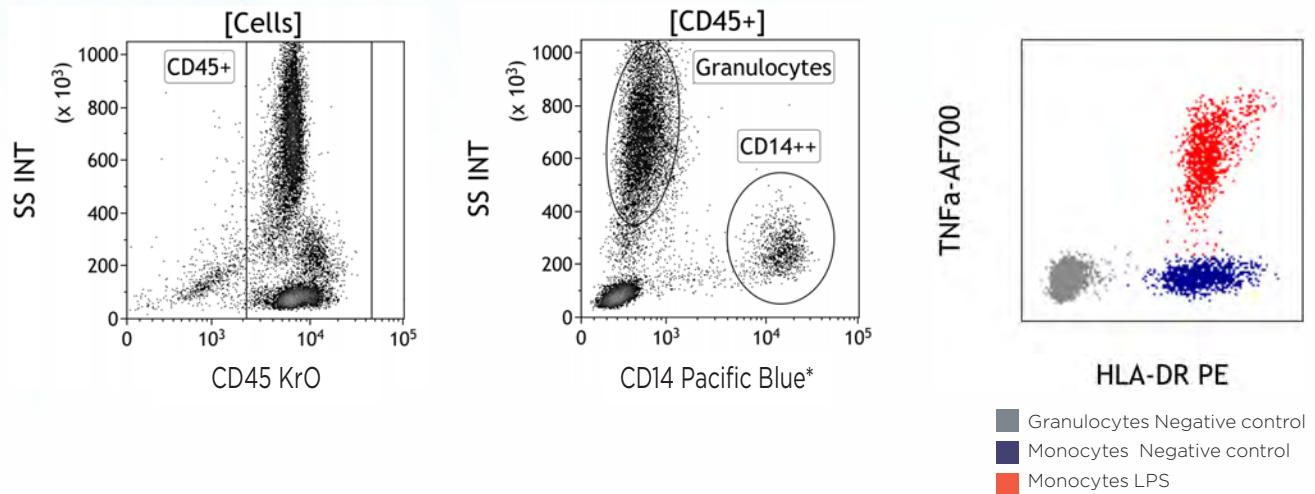
### DURAClone IF Basophil Activation



# DURAClone IF DATA EXAMPLES

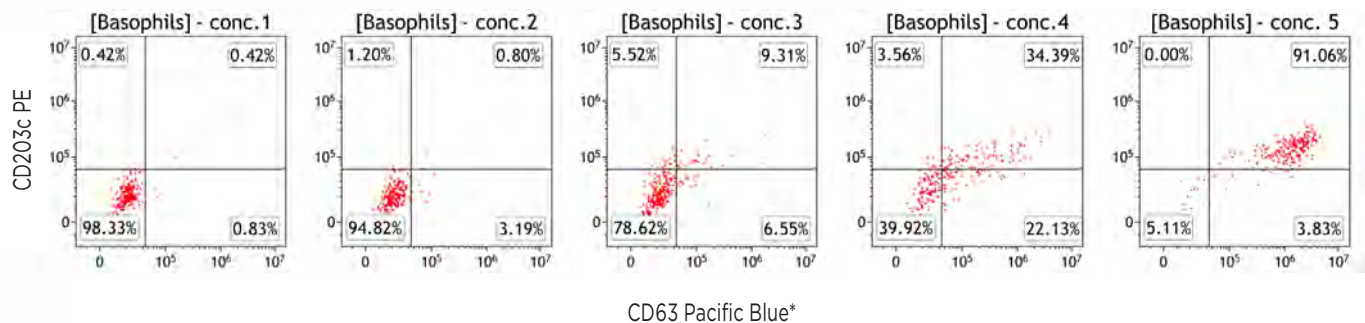
## Inflammatory Response of Monocytes Upon Exposure to LPS\*

IF Monocytes Activation	PB	Kr0	FITC	PE	ECD	PC5.5	PC7	APC	AF647	AF700	AF750	Quality Standard
C21858 (25 tests RU0)	CD14	CD45	-	HLA-DR	-	-	-	-	-	TNF $\alpha$	-	GMP



## Dose-dependent Allergic Activation of Basophils

IF Basophil Activation	PB	Kr0	FITC	PE	ECD	PC5.5	PC7	APC	AF647	AF700	AF750	Quality Standard
C23406 (25 tests RU0)	CD63	CD45	-	CD203c	-	-	CD3	-	CD294 (CRTH2)	-	-	GMP




\* DURActive 3 (C21857)

# MORE DURAClone PANELS

## DURAClone IM for Immune System Research

The dry DURAClone IM antibody panels provide a comprehensive image of the immune system applying dry expert-proven antibody combinations that are easy to implement.

Product	405 nm		488 nm					633 nm					Quality Standard	
	PB	KrO	FITC	PE	ECD	PC5.5	PC7	APC	AF647	AF700	APC-A700	APC-A750		
 Designed by expert labs from	IM Phenotyping Basic Tube B53309 (25 tests RUO)	-	CD45	CD16	CD56	CD19	-	CD14	CD4	-	CD8	-	CD3	GMP
	IM B Cell Tube B53318 (25 tests RUO)	IgM	CD45	IgD	CD21	CD19	-	CD27	CD24	-	-	-	CD38	
	IM T Cell Subsets Tube B53328 (25 tests RUO)	CD57	CD45	CD45RA	CCR7	CD28	PD1	CD27	CD4	-	CD8	-	CD3	
	IM Dendritic Cells Tube B53351 (25 tests RUO)	HLA-DR	CD45	CD16	Lineage**	-	CD1c	CD11c	Clec9A	-	-	CD123	-	
	IM TCRs Tube B53340 (25 tests RUO)	TCRVδ2	CD45	TCRγδ	TCRαβ	HLA-DR	-	TCRVδ1	CD4	-	CD8	-	CD3	
	IM Treg Tube B53346 (25 tests RUO)	Helios	CD45	CD45RA	CD25	-	CD39	CD4	-	FoxP3	-	-	CD3	
	IM Granulocytes Tube B88651 (25 tests RUO)	CD15	CD45	CD294	-	CD16	CD33	CD11b	PD-L1	-	-	Lineage***	CD62L	
	IM Count Tube C00162 (25 tests RUO)	-	-	CD45	Counting Beads	-	7-AAD	-	-	-	-	-	-	

\*\* CD3 / CD19 / CD20 / CD14 / CD56

\*\*\* CD3 / CD14 / CD19 / CD56

## DURAClone RE for Rare Event Detection

The dry DURAClone RE panels enable sensitive detection of rare abnormal cell populations in blood or bone marrow using carefully optimized and highly dosed antibody combinations.

Product	405 nm		488 nm					633 nm			Quality standard
	PB	KrO	FITC	PE	ECD	PC5.5	PC7	APC	APC-A700	APC-A750	
RE CLB Tube B80393 (25 tests RUO)	CD20	CD45	CD81	ROR-1	-	CD79b	CD19	CD5	-	CD43	GMP
RE PC Tube B80394 (25 tests RUO)	CD38	CD45	CD81	CD27	-	CD19	CD200	CD138	-	CD56	
RE ALB Tube C00163 (25 tests RUO)	-	CD45	CD58	-	CD34	CD10	CD19	-	CD38	CD20	

PB: Pacific Blue\*  
KrO: Krome Orange

AF647: Alexa Fluor\* 647  
AF700: Alexa Fluor\* 700  
AF750: Alexa Fluor\* 750

APC-A700: APC-Alexa Fluor\* 700  
APC-A750: APC-Alexa Fluor\* 750



## Choose Beckman Coulter for Benchmark Expertise and Innovation

For over 80 years Beckman Coulter has driven innovation. We remain committed to shaping flow cytometry technology to fit seamlessly into your lab's workflow and to provide an optimal user experience. When you choose a Beckman Coulter solution you receive the a high level of expertise, innovation, and quality assurance.



Contact your local Beckman Coulter sales representative.



or visit <http://beckman.com/reagents/coulter-flow-cytometry/antibodies-and-kits/DURAClone-panels>



For Research Use Only - Not for use in Diagnostic procedures

© 2018 Beckman Coulter, Inc. All rights reserved. Beckman Coulter, the stylized logo, and the Beckman Coulter product and service marks mentioned herein are trademarks or registered trademarks of Beckman Coulter, Inc. in the United States and other countries.  
\* Alexa Fluor and Pacific Blue are registered trademarks of Molecular Probes, Inc.

For Beckman Coulter's worldwide office locations and phone numbers, please visit "Contact Us" at [beckman.com/home](http://beckman.com/home)

FLOW-3822SB06.18